



BUILDING A BETTER I-4

Stay Informed:

- » Project Hotline: 844-ULT-INFO (858-4636)
- » Sign up for email and text alerts at I4Ultimate.com
- » For real-time traffic conditions call 511, download Florida 511 mobile apps or visit FL511.com
- » Follow @i4ultimate on Twitter

INTERSECTION OF OAK RIDGE ROAD AND ADRIANNA AVENUE CLOSING

THE INTERSECTION OF OAK RIDGE ROAD AND ADRIANNA AVENUE IS CLOSING FOR SEVEN MONTHS AS SOON AS EARLY JANUARY.

The Florida Department of Transportation is temporarily closing the intersection of Oak Ridge Road and Adrianna Avenue for seven months as soon as early January. The continuous closure is necessary for construction of the new Grand National Drive overpass.

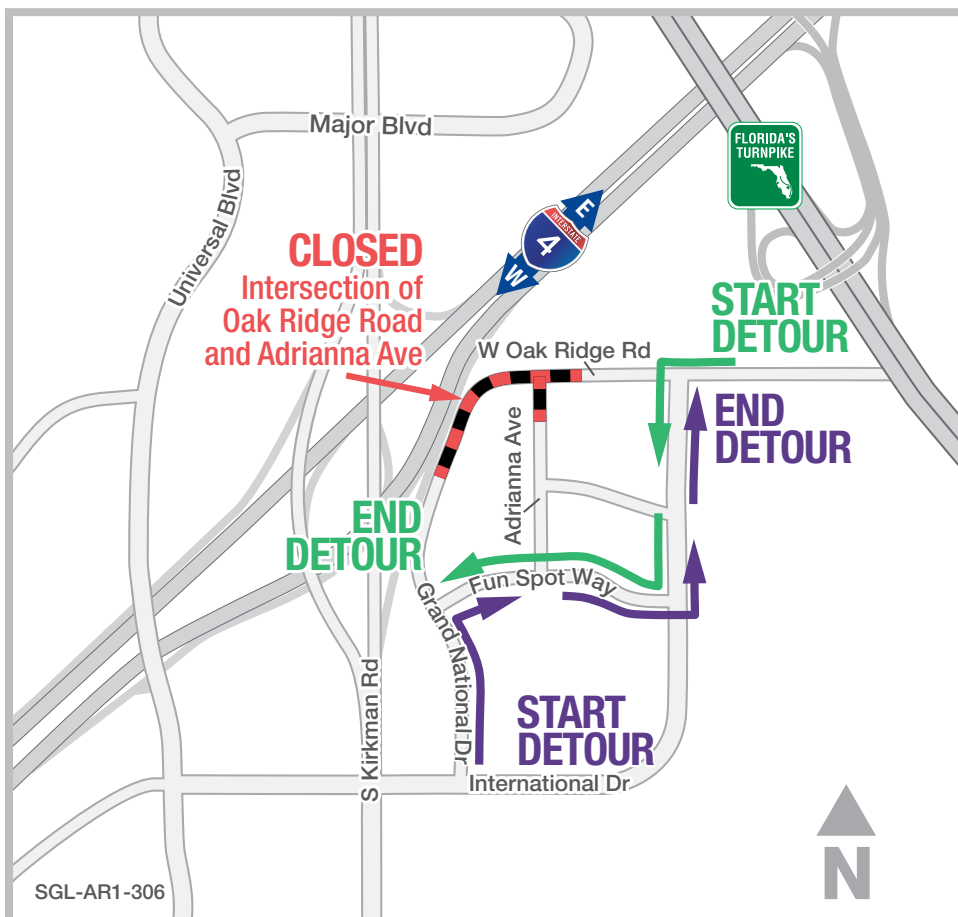
Download this flyer at:
i4ultimate.com/grandnational

FROM: Northbound Grand National Drive

Turn right onto Fun Spot Way. Proceed to International Drive, and turn left. Turn left onto Oak Ridge Road to end detour.

FROM: Westbound Oak Ridge Road

Turn left onto Fun Spot Way. Proceed to Grand National Drive, and turn left to end detour.



PROJECT INFO

The \$2.3 billion I-4 Ultimate project is reconstructing 21 miles of interstate from west of Kirkman Road to east of State Road 434 in Longwood. For more information about I-4 Ultimate, contact David Parks, I-4 Ultimate Public Information Officer, at 844-ULT-INFO (844-858-4636) or DavidParks@i4Ultimate.com.

Closure subject to change. Construction progress, roadway conditions and weather may require schedule adjustments. Please check i4ultimate.com/alertsmap for most up-to-date information.



Sign up for I-4 Construction Updates and Alerts at I4Ultimate.com
Get real-time traffic and incident alerts at FL511.com





BUILDING A BETTER I-4

Stay Informed:

- » Project Hotline: 844-ULT-INFO (858-4636)
- » Sign up for email and text alerts at I4Ultimate.com
- » For real-time traffic conditions call 511, download Florida 511 mobile apps or visit FL511.com
- » Follow @i4ultimate on Twitter

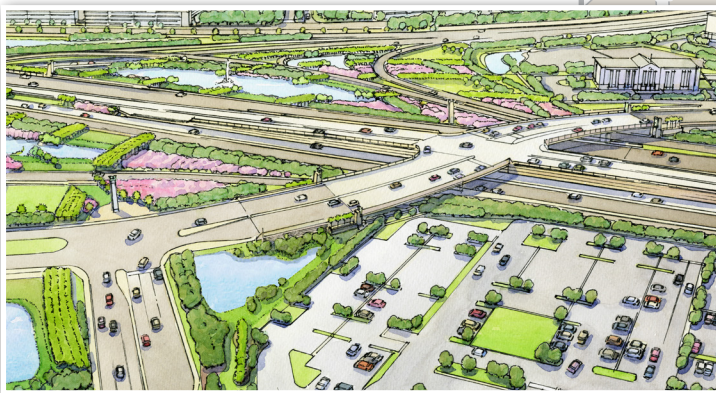
WHY DOES GRAND NATIONAL DRIVE NEED TO CLOSE?

The long-term closure of Grand National Drive will allow for the construction of a new Interstate 4 (I-4) overpass that will connect Grand National Drive to Caravan Court.

The extension over I-4 is providing a much-needed additional connection for the popular tourist area between the International Drive area and Universal Orlando. The new overpass will feature express lane direct access in the eastbound direction from Grand National Drive and the westbound direction to Grand National Drive. Additional ramps will be constructed in anticipation of the future express lane extension west on I-4.

KEY

- I-4 East/West
- I-4 Exit/Entrance Ramps
- I-4 Express Lanes
- Grand National Drive Overpass (New)



Conceptual preliminary landscape illustration.
Final landscape plan subject to design changes.



Sign up for I-4 Construction Updates and Alerts at I4Ultimate.com
Get real-time traffic and incident alerts at FL511.com

