



BUILDING A BETTER I-4

Stay Informed:

- » Project Hotline: 844-ULT-INFO (858-4636)
- » Sign up for email and text alerts at fdot.tips/I4Alerts
- » Follow @i4Ultimate on Twitter
- » Subscribe to our monthly newsletter at fdot.tips/I4News

EASTBOUND I-4 AT MAITLAND BOULEVARD CLOSING AT NIGHT

EASTBOUND INTERSTATE 4 (I-4) FROM MAITLAND BOULEVARD (STATE ROAD 414) TO STATE ROAD (S.R.) 436 IS CLOSING FROM 12 AM TO 5 AM ON APRIL 17, 18 AND 19

The Florida Department of Transportation will close eastbound I-4 from 12 a.m. to 5 a.m. on April 17, 18 and 19. All eastbound traffic will exit I-4 at westbound Maitland Boulevard (Exit 90B) and follow a detour route to the eastbound I-4 on-ramp at S.R. 436. Eastbound I-4 on-ramps from Maitland Boulevard will close from 10 p.m. to 5 a.m. on the same nights of the eastbound I-4 closures. Several nights of westbound I-4 closures are scheduled following the conclusion of the eastbound I-4 closures. See reverse for more information. These closures are necessary to safely place girders for the Wymore Road bridge over I-4.

Traveling eastbound on I-4:

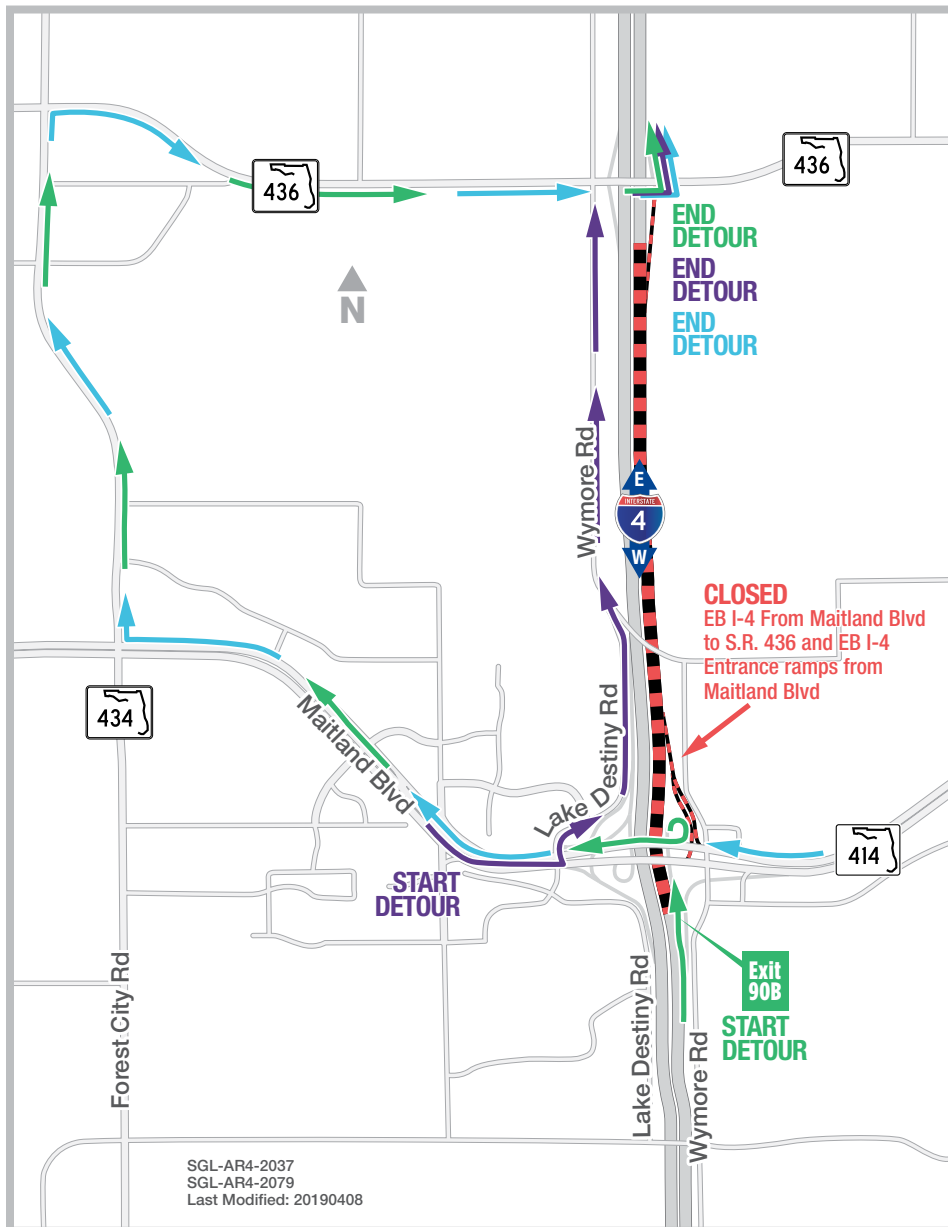
- Take Exit 90B to westbound Maitland Boulevard
- Turn right onto S.R. 434
- Turn right onto S.R. 436
- Follow signs to eastbound I-4 on-ramp

Traveling eastbound on Maitland Boulevard to eastbound I-4:

- Turn left onto Lake Destiny Road
- Turn left onto Wymore Road
- Turn right onto S.R. 436
- Follow signs to eastbound I-4 on-ramp

Traveling westbound on Maitland Boulevard to eastbound I-4:

- Continue on westbound Maitland Boulevard to S.R. 434
- Turn right onto S.R. 434
- Turn right onto S.R. 436
- Follow signs to eastbound I-4 on-ramp



Closures subject to change. Construction progress, roadway conditions and weather may require schedule adjustments.

Please check i4ultimate.com/alertsmap for the most up-to-date information.



Sign up for I-4 Construction Updates and Alerts at I4Ultimate.com
Learn about commuter options in Central Florida at reThinkYourCommute.com





BUILDING A BETTER I-4

Stay Informed:

- » Project Hotline: 844-ULT-INFO (858-4636)
- » Sign up for email and text alerts at fdot.tips/I4Alerts
- » Follow @i4Ultimate on Twitter
- » Subscribe to our monthly newsletter at fdot.tips/I4News

WESTBOUND I-4 AT S.R. 436 CLOSING AT NIGHT

WESTBOUND INTERSTATE 4 (I-4) FROM STATE ROAD (S.R.) 436 TO MAITLAND BOULEVARD (STATE ROAD 414) IS CLOSING FROM 12 AM TO 5 AM ON APRIL 16, 17, 19, 20 and 21

The Florida Department of Transportation will close westbound I-4 from 12 a.m. to 5 a.m. on April 15, 16, 17, 19, 20 and 21. All westbound traffic will exit I-4 at westbound S.R. 436 (Exit 92) and follow a detour route to the westbound I-4 on-ramp at Maitland Boulevard. Westbound I-4 on-ramp from S.R. 436 and westbound I-4 exit ramps to Maitland Boulevard will close from 10 p.m. to 5 a.m. on the same nights of the westbound I-4 closures. Several nights of eastbound I-4 closures are scheduled preceding the westbound I-4 closures. See reverse for more information. These closures are necessary to safely place girders for the Wymore Road bridge over I-4.

Traveling westbound on I-4 to continue on westbound I-4:

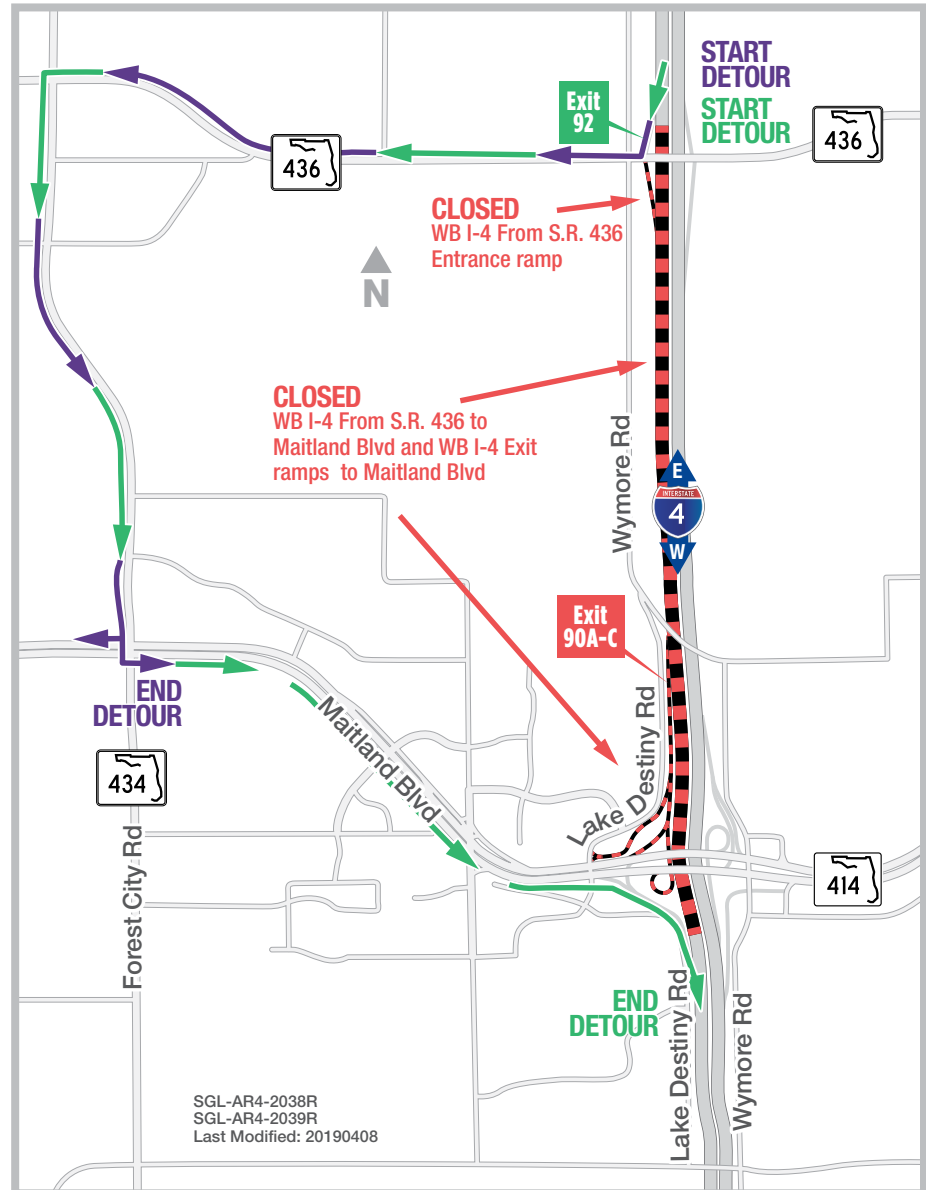
- Take Exit 92 to westbound S.R. 436
- Turn left onto S.R. 434
- Turn left onto Maitland Boulevard
- Follow signs to westbound I-4 on-ramp

Traveling westbound on I-4 to Maitland Boulevard:

- Take Exit 92 to westbound S.R. 436
- Turn left onto S.R. 434
- Turn onto Maitland Boulevard

PROJECT INFO

The \$2.3 billion I-4 Ultimate project is reconstructing 21 miles of interstate from west of Kirkman Road to east of State Road 434 in Longwood. For more information about I-4 Ultimate, contact David Parks, I-4 Ultimate Public Information Officer, at 844-ULT-INFO (844-858-4636) or DavidParks@i4Ultimate.com.



Closures subject to change. Construction progress, roadway conditions and weather may require schedule adjustments.

Please check i4ultimate.com/alertsmap for the most up-to-date information.



Sign up for I-4 Construction Updates and Alerts at I4Ultimate.com
Learn about commuter options in Central Florida at reThinkYourCommute.com

