



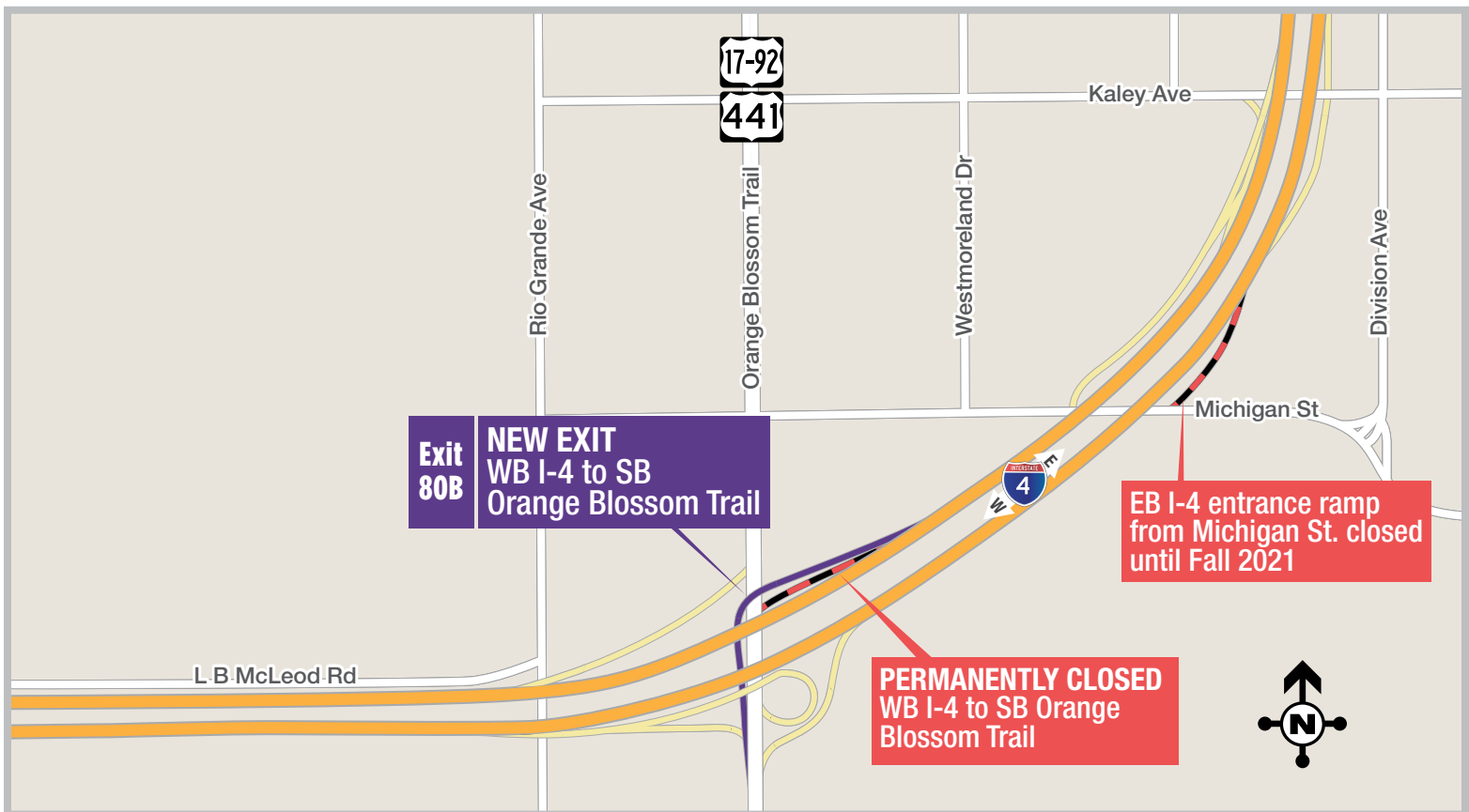
BUILDING A BETTER I-4

Stay Informed:

- » Project Hotline: 844-ULT-INFO (858-4636)
- » Sign up for email and text alerts at fdot.tips/I4Alerts
- » Follow @i4Ultimate on Twitter
- » Subscribe to our monthly newsletter at fdot.tips/I4News

NEW WESTBOUND I-4 EXIT TO SOUTHBOUND ORANGE BLOSSOM TRAIL OPENING SEPTEMBER 21

The Florida Department of Transportation (FDOT) is opening a new ramp from westbound Interstate 4 (I-4) to southbound Orange Blossom Trail (U.S. 441/17-92), placing the ramp in its final configuration, as soon as Monday morning, September 21. Replacing the left-hand exit to southbound Orange Blossom Trail with a more traditional right-hand exit reduces weaving and meets motorists' expectations. The longer, free-flowing ramp also creates additional space for drivers to slow down as they exit the interstate. An additional lane from Orange Blossom Trail to John Young Parkway also will be added as part of the shift. Closures will be necessary to implement these shifts. See reverse side for more information and detours.



PROJECT INFO

The \$2.3 billion I-4 Ultimate project is reconstructing 21 miles of interstate from west of Kirkman Road to east of State Road 434 in Longwood. For more information about I-4 Ultimate, contact David Parks, I-4 Ultimate Community Outreach Specialist, at 844-ULT-INFO (844-858-4636) or DavidParks@i4Ultimate.com.



Sign up for I-4 Construction Updates and Alerts at I4Ultimate.com

Learn about design and construction on the next 40 miles of I-4 at I4Beyond.com



BUILDING A BETTER I-4

Stay Informed:

- » Project Hotline: 844-ULT-INFO (858-4636)
- » Sign up for email and text alerts at fdot.tips/I4Alerts
- » Follow @i4Ultimate on Twitter
- » Subscribe to our monthly newsletter at fdot.tips/I4News

ORANGE BLOSSOM TRAIL UNDER I-4 AND MULTIPLE RAMPS CLOSING OVERNIGHT

CLOSURES NECESSARY TO IMPLEMENT TRAFFIC SHIFTS

The Florida Department of Transportation (FDOT) is temporarily closing the westbound Interstate 4 (I-4) exit ramp to southbound Orange Blossom Trail (U.S. 441/17-92) and the westbound I-4 entrance ramp from Kaley Avenue overnight from 10 p.m. Sunday, September 20, to 5 a.m. Monday, September 21.

Additionally, Orange Blossom Trail under Interstate 4 (I-4), the eastbound I-4 exit, as soon as Monday morning, September 21, to northbound Orange Blossom Trail, and the westbound I-4 exit ramp to southbound Orange Blossom Trail closes overnight from 10 p.m. Monday, September 21, to 5 a.m. Tuesday, September 22.

The closures are necessary to implement traffic shifts on westbound I-4 and on Orange Blossom Trail under I-4. See reverse side for more information.

Traveling on eastbound I-4 to northbound Orange Blossom Trail:

- Use Exit 79 to John Young Parkway
- Turn right onto John Young Parkway
- Turn left onto 33rd Street
- Turn left onto Rio Grande Avenue
- Turn right onto Michigan Street

Traveling westbound on I-4 to southbound Orange Blossom Trail:

- Continue westbound on I-4
- Use Exit 79 to John Young Parkway
- Turn right onto John Young Parkway
- Turn left onto 33rd Street
- Turn right onto Rio Grande Avenue
- Turn left onto 34th Street

Traveling southbound on Orange Blossom Trail:

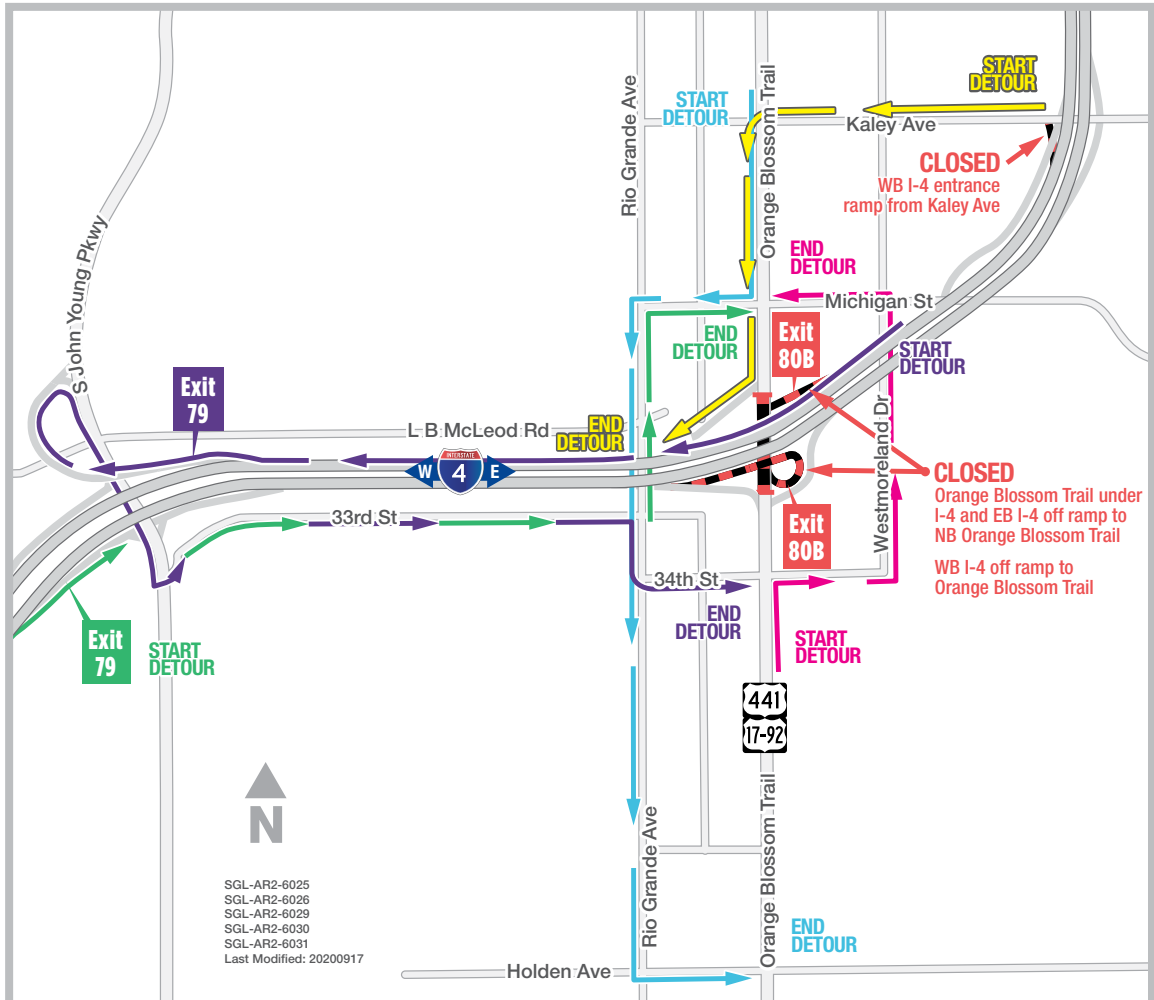
- Turn right onto Michigan Street
- Turn left onto Rio Grande Avenue
- Turn left onto Holden Avenue

Traveling northbound on Orange Blossom Trail:

- Turn right onto 34th Street
- Turn left onto Westmoreland Drive
- Turn left onto Michigan Street

Traveling to westbound I-4 from Kaley Avenue:

- Continue westbound on Kaley Avenue
- Turn right onto Orange Blossom Trail
- Follow signs to westbound I-4



SGL-AR2-6025
SGL-AR2-6026
SGL-AR2-6029
SGL-AR2-6030
SGL-AR2-6031
Last Modified: 20200917